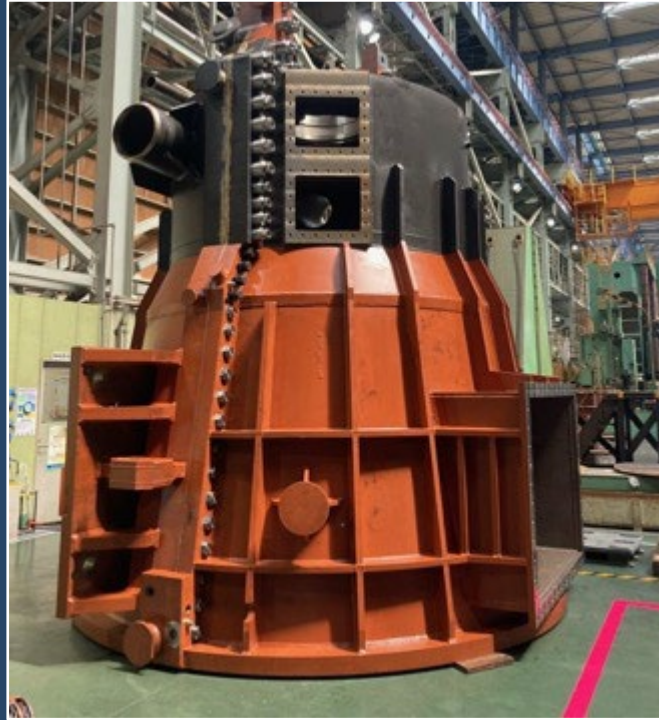




Federal Actions to Unleash U.S. Geothermal Power + Critical Minerals

Hell's Kitchen Power and Critical Minerals
Salton Sea Geothermal Field, Imperial County, CA



Hell's Kitchen Power and Lithium Project



Clean Power

Stage 1 to deliver 50 megawatts of clean, renewable power



Clean Lithium

Stage 1 to deliver 25,000 metric tons of lithium hydroxide monohydrate



Sustainable Production

Highest sustainability standards with near-zero CO₂ emissions and minimal environmental impacts

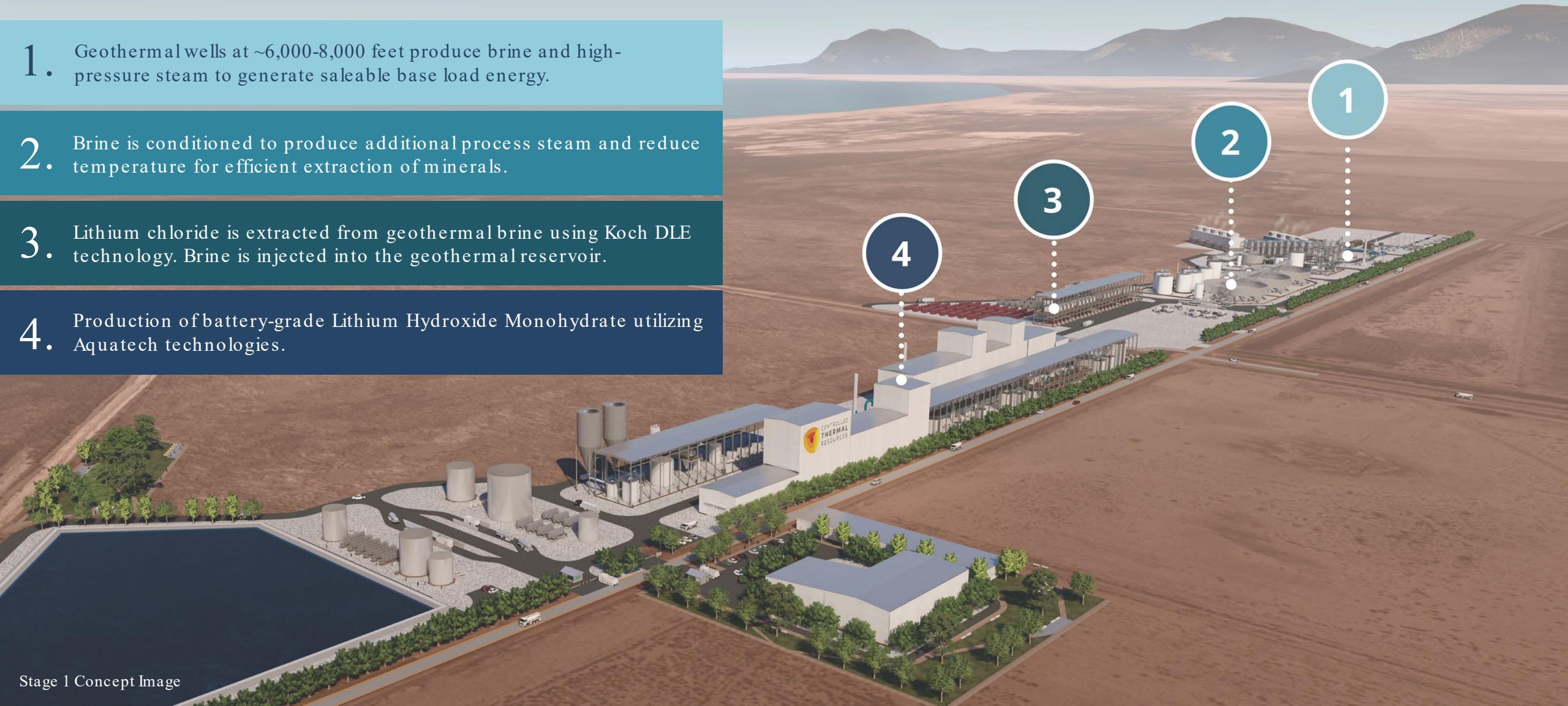


Planned Expansion

7 project stages estimated to 350MW of power and 175,000 tonnes of lithium

A Fully Integrated Power and Critical Minerals Production Process

1. Geothermal wells at ~6,000-8,000 feet produce brine and high-pressure steam to generate saleable base load energy.
2. Brine is conditioned to produce additional process steam and reduce temperature for efficient extraction of minerals.
3. Lithium chloride is extracted from geothermal brine using Koch DLE technology. Brine is injected into the geothermal reservoir.
4. Production of battery-grade Lithium Hydroxide Monohydrate utilizing Aquatech technologies.



The Big Picture

Multi-stage Development and Co-location Potential

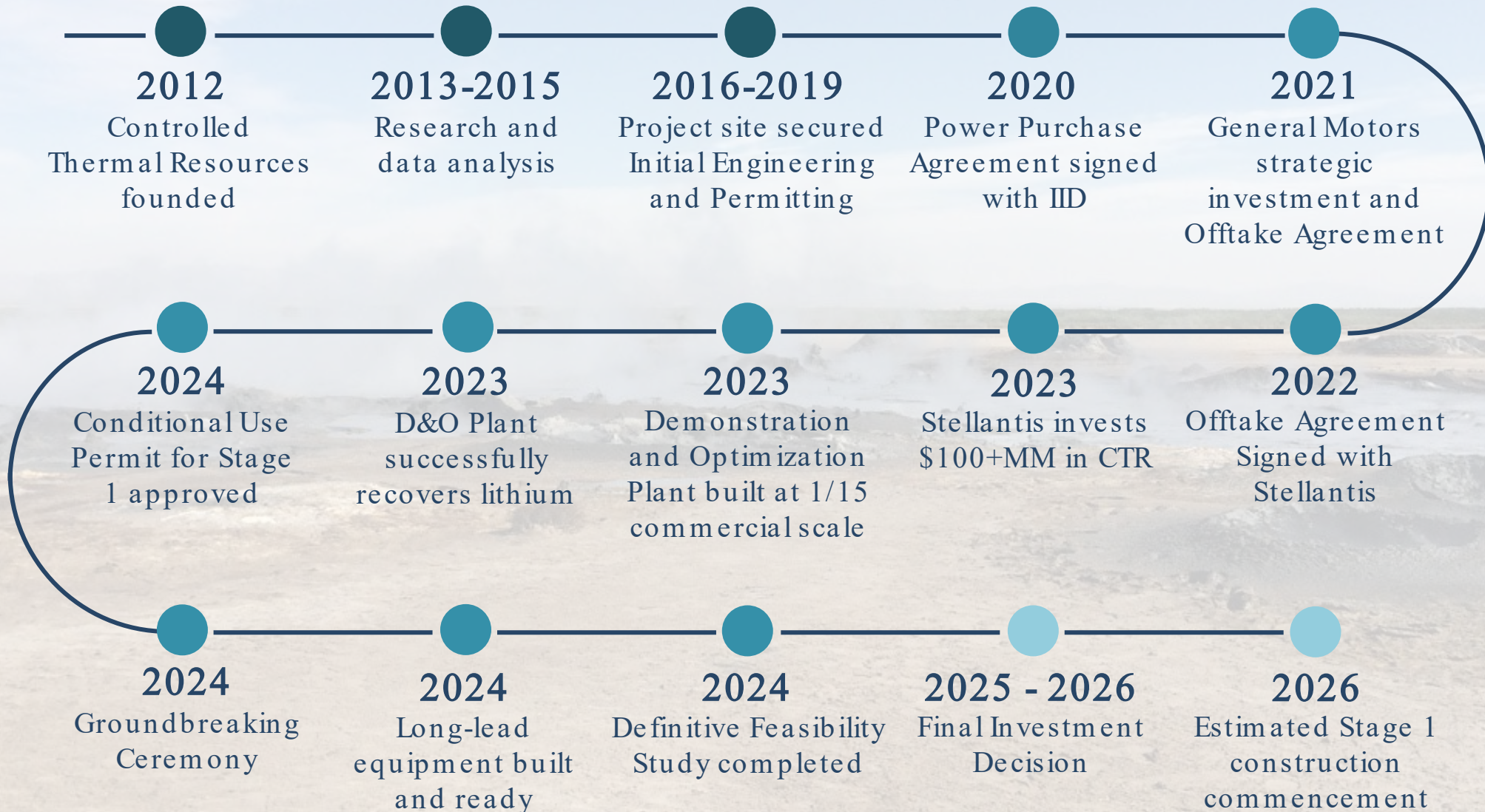


| Potential Development | CTR | Battery Hub 1 | Battery Hub 2 |
|-----------------------|---|---|--------------------|
| Potential Facilities | 7 Stages Power 350 MW Lithium 175,000 tpa | pCAM/CAM Cathode/Anode Cell Manufacturing | Cell Manufacturing |
| Potential Investment | ~\$14 billion | ~\$9.5 billion | ~\$3.5 billion |
| Potential Jobs | ~940 | ~4,500 | ~2,500 |

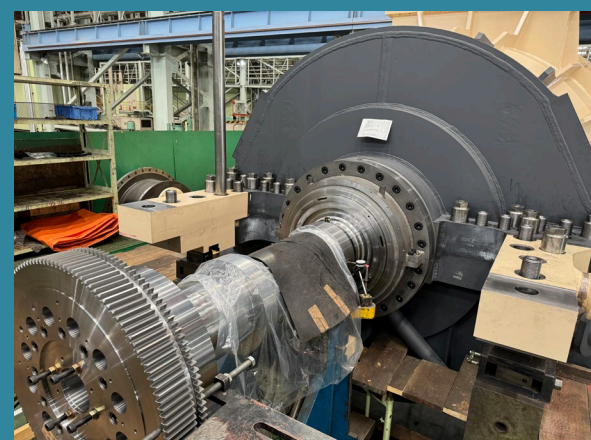
Lithium Valley Campus Concept Image
Hell's Kitchen - Imperial County, California

*Estimates based on comparative industry operations, co-location potential, and ongoing resource work

Over 12 Years in Development with Global Leaders of Industry



Long-lead equipment is built and ready to assemble



Powerful Actions Taken by U.S. Government to Onshore American Energy & Critical Minerals



Declaring a National Emergency

Declares a national emergency related to energy and minerals supplies in the United States.



Unleashing American Energy

Aims to promote and encourage domestic energy and critical minerals production



Immediate Measures to Increase U.S. Mineral Production

Contains key provisions that directly support domestic critical minerals projects like CTR's Hell's Kitchen.



Emergency Permitting to Accelerate Geothermal Energy Development

Expedites emergency permitting to scale geothermal development on federal lands in the United States.



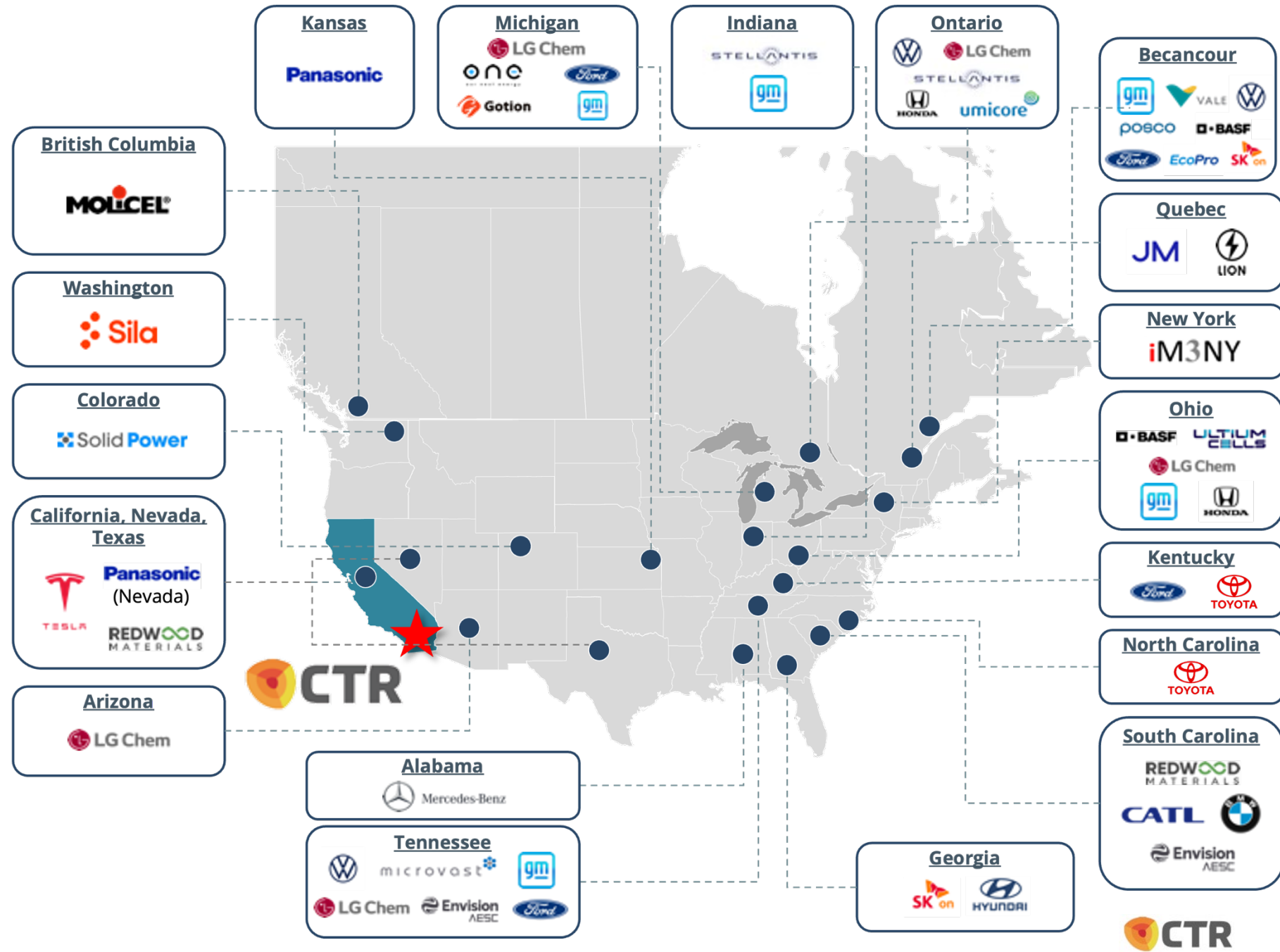


Directives to Supercharge Domestic Minerals and Power Production

- ✓ Directing agencies to identify key projects and expedite approval processes.
- ✓ Identifying priority critical minerals projects via Fast-41, opening federal lands for leasing, and deploying financial tools to accelerate production.
- ✓ Supporting funding via the Defense Production Act, National Security Capital Forum, EXIM Bank, and the Development Finance Corporation.
- ✓ Improving regulatory conditions by addressing regulatory bottlenecks and review of mining legislation.

Meeting North American Demand with Secure Critical Minerals

- Proximity to U.S. customers
- Existing logistical infrastructure
- Stable political and regulatory environment
- U.S. government focused on building a secure domestic Battery Supply Chain.



Critical Minerals Contained within CTR Brine

■ Occurs in Abundant Quantities ■ Investigating Economic Concentrations

| | | | | | | | | | | | | | | | | | |
|-------------|----|----|----|----|----|----|----|----|----|----|----|----|----|----|----|----|----|
| H | | | | | | | | | | | | | | | | | He |
| Li | Be | | | | | | | | | | | B | C | N | O | F | Ne |
| Na | Mg | | | | | | | | | | | Al | Si | P | S | Cl | Ar |
| K | Ca | Sc | Ti | V | Cr | Mn | Fe | Co | Ni | Cu | Zn | Ga | Ge | As | Se | Br | Kr |
| Rb | Sr | Y | Zr | Nb | Mo | Tc | Ru | Rh | Pd | Ag | Cd | In | Sn | Sb | Te | I | Xe |
| Cs | Ba | La | Hf | Ta | W | Re | Os | Ir | Pt | Au | Hg | Tl | Pb | Bi | Po | At | Rn |
| Fr | Ra | Ac | Rf | Db | Sg | Bh | Hs | Mt | Ds | Rg | Cn | Nh | Fl | Mc | Lv | Ts | Og |
| Lanthanides | | La | Ce | Pr | Nd | Pm | Sm | Eu | Gd | Tb | Dy | Ho | Er | Tm | Yb | Lu | |
| Actinides | | Ac | Th | Pa | U | Np | Pu | Am | Cm | Bk | Cf | Es | Fm | Md | No | Lr | |

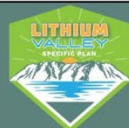
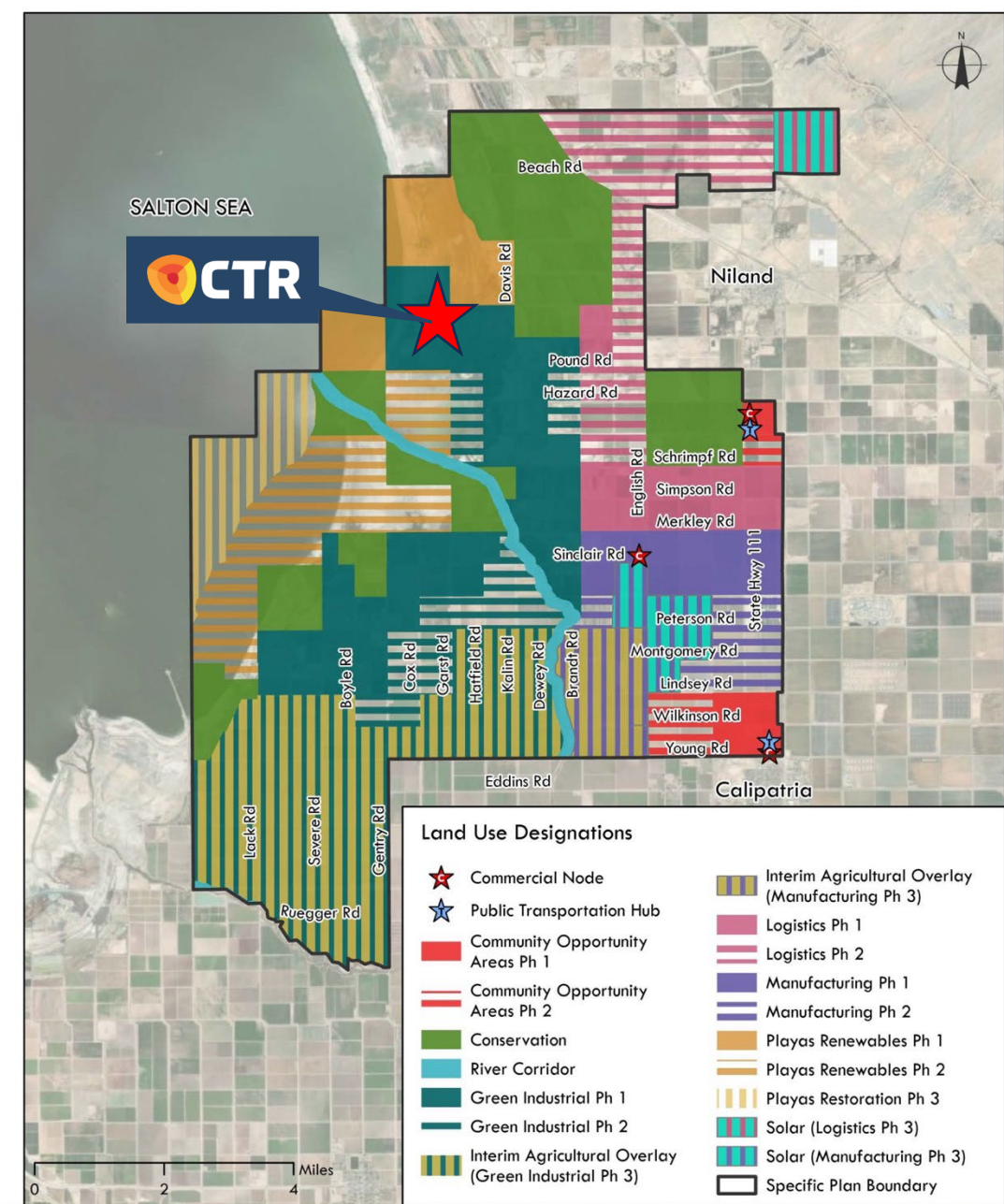
| Dept of the Interior Critical Minerals* | | Dept of Energy Critical Materials* | Reported Occurring Isotopes | Other Non-Critical Elements |
|---|--|--|--|-----------------------------------|
| Lithium Manganese Zinc Cesium Rubidium Cerium Dysprosium Erbium Europium Arsenic Gadolinium | Holmium Lanthanum Lutetium Neodymium Praseodymium Samarium Scandium Terbium Thulium Ytterbium | Lithium Manganese Neodymium Praseodymium Terbium Copper | Lithium - 6 Cesium - multi Rubidium - multi Strontium - multi Boron - 9 & 10 | Potassium Boron |

Source: Idaho National Laboratory - Rare earth elements in the CTR's Salton Sea geothermal brine, May 2023
* <https://www.energy.gov/cmm/what-are-critical-materials-and-critical-minerals>



Moving Forward – Key Federal Actions to Support Lithium Valley

- Inclusion of CTR's Hell's Kitchen project on the FAST-41 Dashboard to ensure interagency timeline enforcement
- Expedite approvals for CTR's Approved Jurisdictional Determination to advance multi-stage development and construction.
- Support the Imperial Valley Specific Plan and Programmatic EIR to transform the Imperial Valley into a Clean Energy, Manufacturing, and Data Industry hub.
- Department of Interior to support and fast-track critical infrastructure siting and development.
- Designate Lithium Valley as a 'Strategic National Energy and Mineral Corridor'
- Allocate additional funding under the Defense Production Act for Lithium Valley developers.





Disclaimer: This Presentation was prepared by Controlled Thermal Resources Holdings Inc., a Delaware corporation (the “Company”), in order to provide preliminary or general information and should be treated confidentially. This Presentation does not constitute an offer to sell or the solicitation of an offer to buy any securities of the Company or its affiliates. No offer of securities shall be made except by means of a prospectus meeting the requirements of the Securities Act of 1933, as amended, and no offer to sell or solicitation of an offer to buy shall be made in any jurisdiction in which such offer, solicitation or sale would be unlawful prior to registration or qualification under the securities laws of any such jurisdiction. Certain statements contained within this document including any documents, presentations, website links, reports, or other communications, may contain “forward-looking statements” within the meaning of applicable laws. These statements are based on current expectations, estimates, forecasts, and projections about our business, future performance, strategies, and plans, as well as assumptions made by management. Forward-looking statements typically include words such as “anticipate,” “expect,” “intend,” “plan,” “believe,” “estimate,” “project,” “forecast,” “likely,” “may,” “should,” and similar expressions. These statements are not guarantees of future performance and are subject to risks, uncertainties, and other factors, many of which are beyond our control and may cause actual results to differ materially from those expressed or implied by such forward-looking statements. Factors that may affect future results include but are not limited to; changes in market conditions; economic trends; changes in laws, regulations, or governmental policies; technological advancements; and other business risks detailed in our filings with regulatory bodies, if applicable. We undertake no obligation to publicly update or revise any forward-looking statements, whether as a result of new information, future events, or otherwise, except as required by law.